

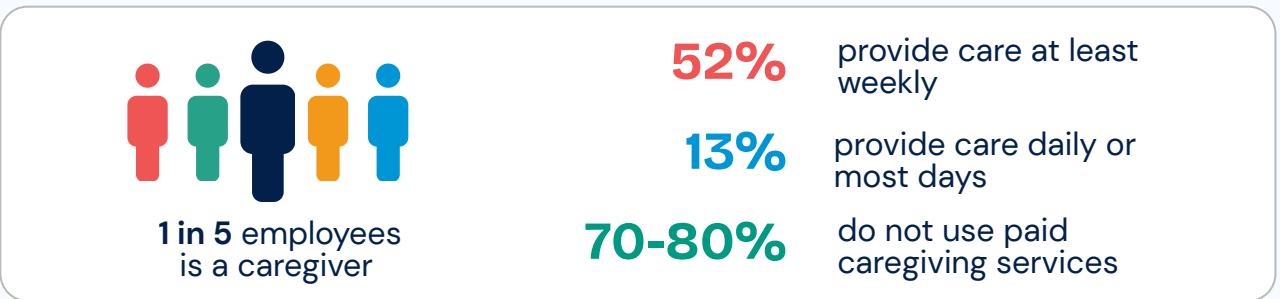
Caregiver Strain is a Workforce Risk

And a Strategic Opportunity

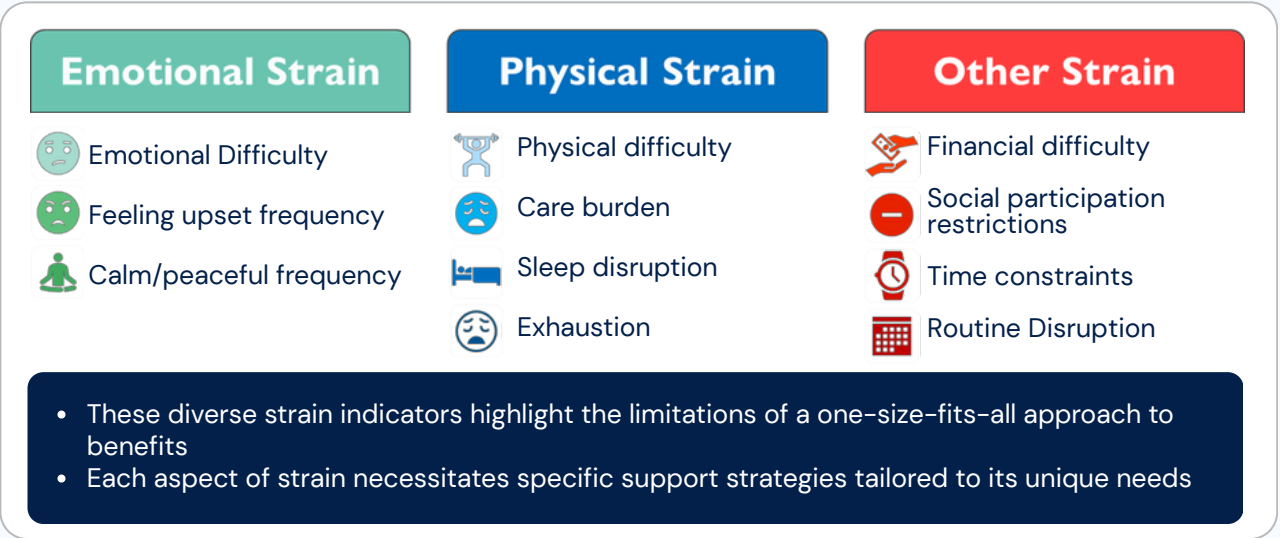
Evidence from Analysis of NSOC Round 13, Johns Hopkins University* (N = 1058)



Caregiver strain is not episodic
It's persistent, and it walks into work every day

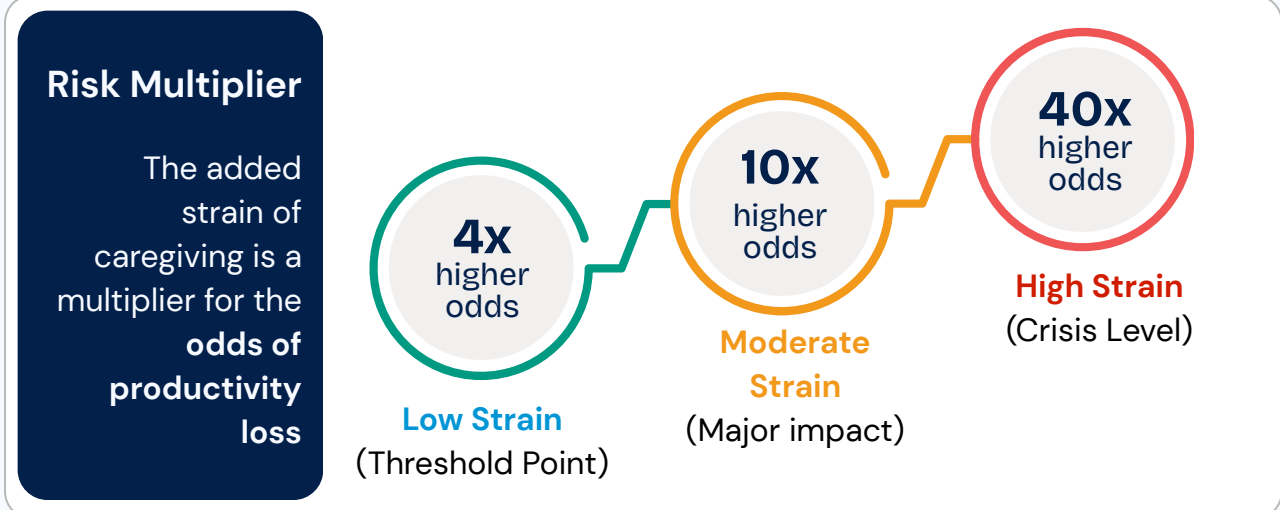


The complexity of caregiver strain



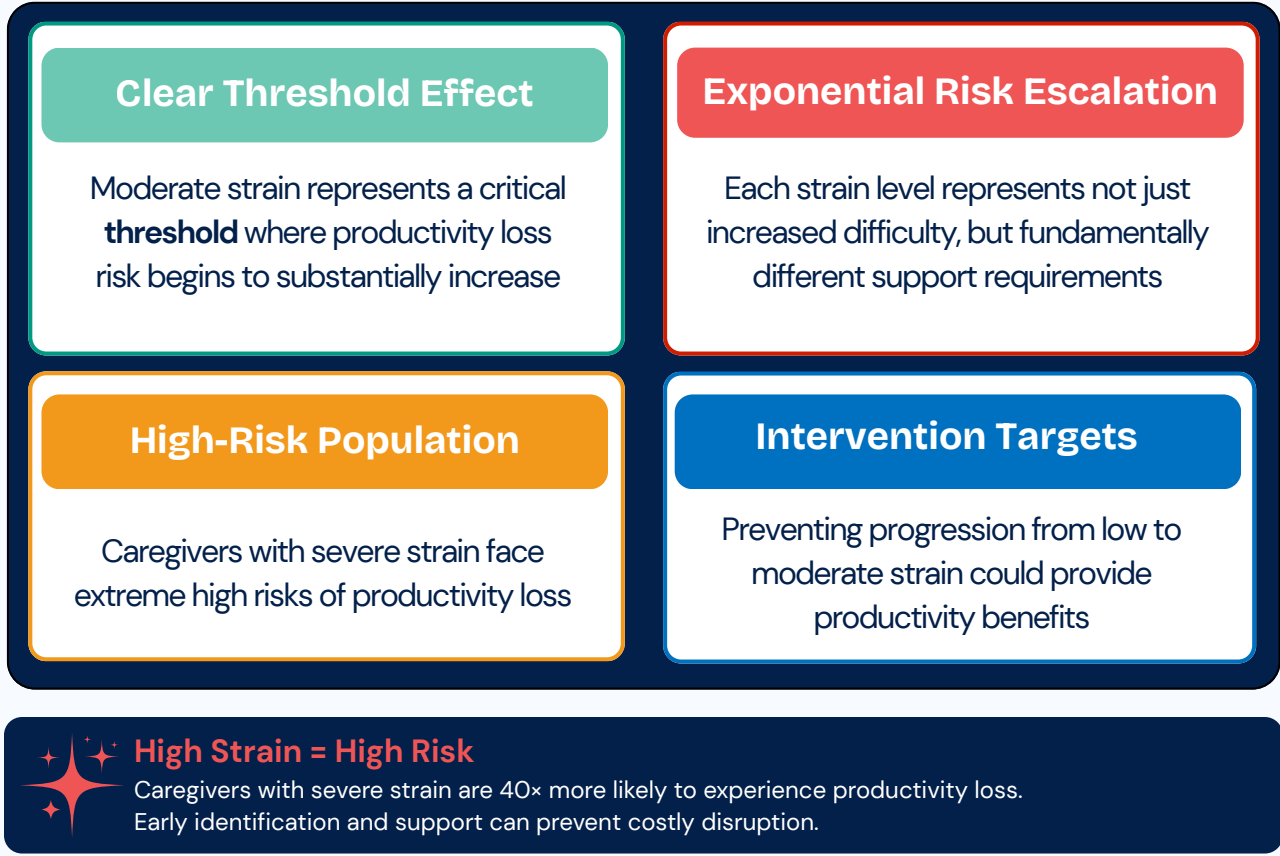
Source: 11-component validated NSOC Caregiver Strain Scale, Johns Hopkins University*

Caregiver strain is a strong predictor of productivity loss

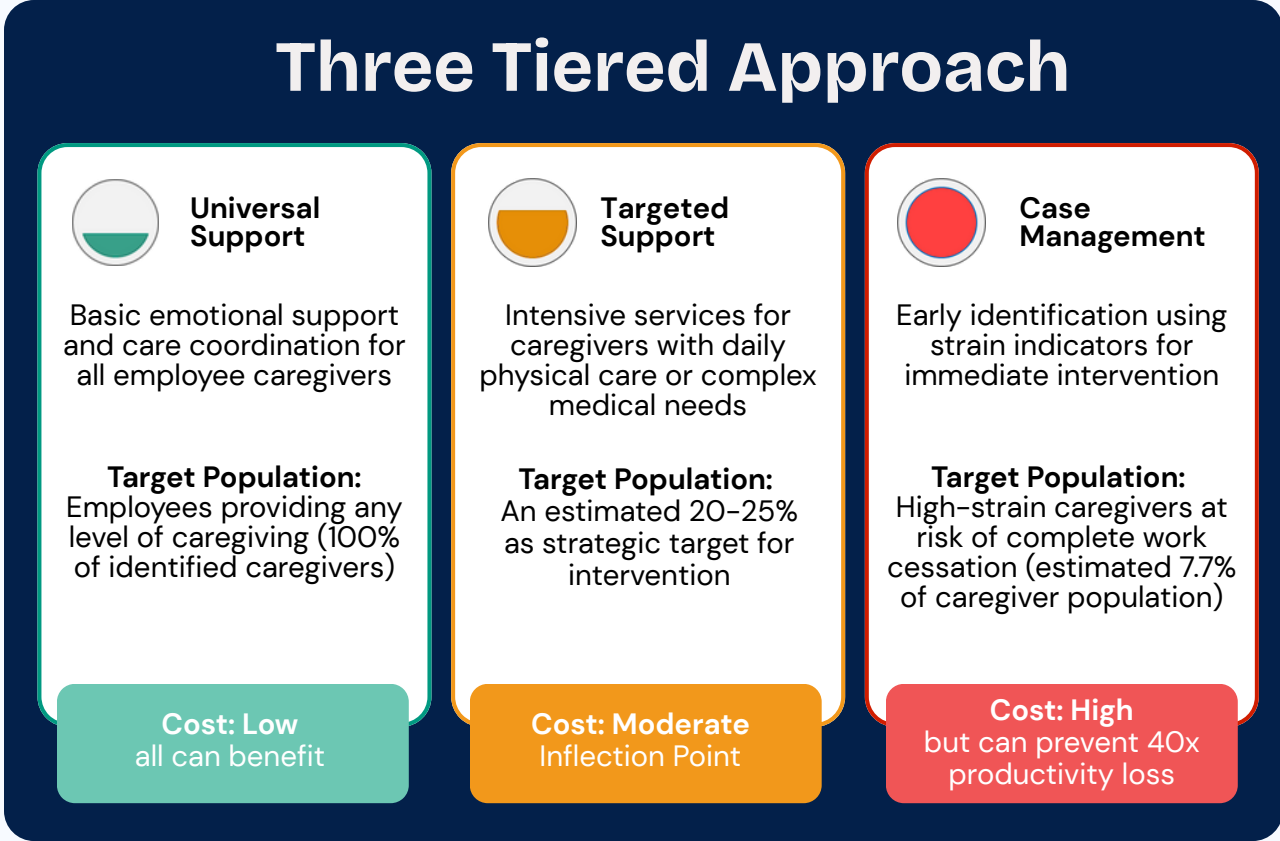


Source: Analysis of NSOC Round 13, Johns Hopkins University* (F(4, 1054) = 26.90, P < .001)

Clinical and Policy Implications



This tiered model enables organizations to concentrate resources on impactful support programs



*Note: Analysis of the National Study of Caregiving Round 13, Johns Hopkins University and the validated 11-component NSOC Caregiver Strain Scale tested against productivity loss using survey-weighted ordered logistic regression (F=26.90, p<0.001). Source: National Study of Caregiving (NSOC), Round 13. IBI acknowledges Wellthy, Inc. for providing de-identified administrative data on caregiving support services. The analyses and conclusions presented are those of IBI.